

## CRT-580 DEMO USE MANUAL

Step 1:

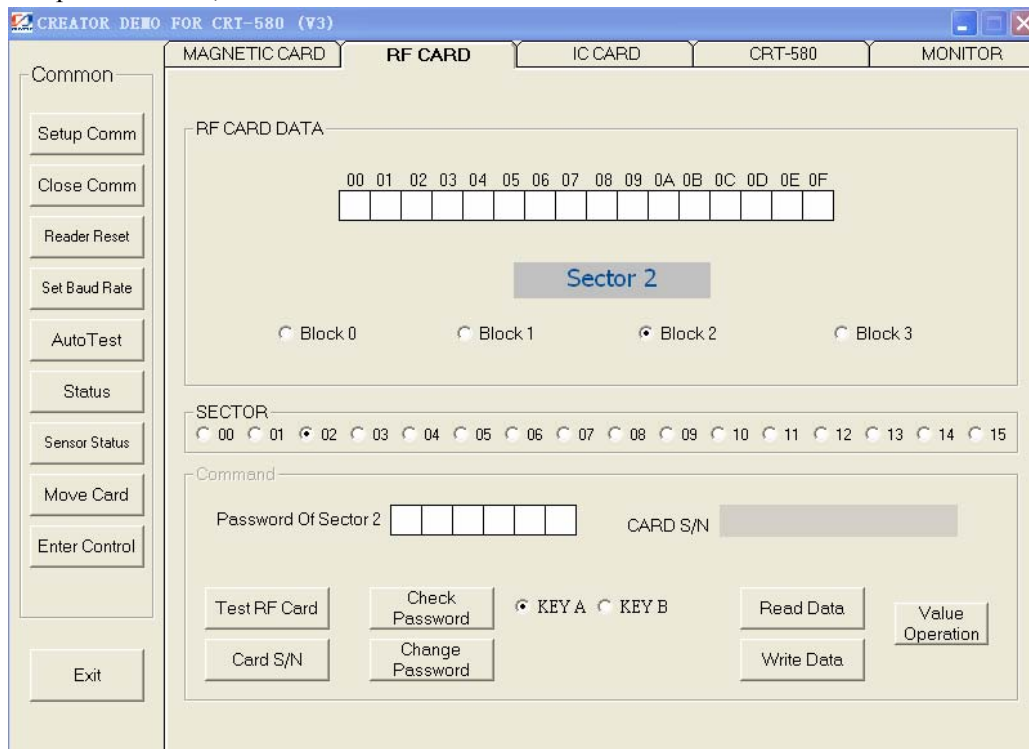
Connect the unit to your PC(Host) via RS-232 interface.

Step 2:

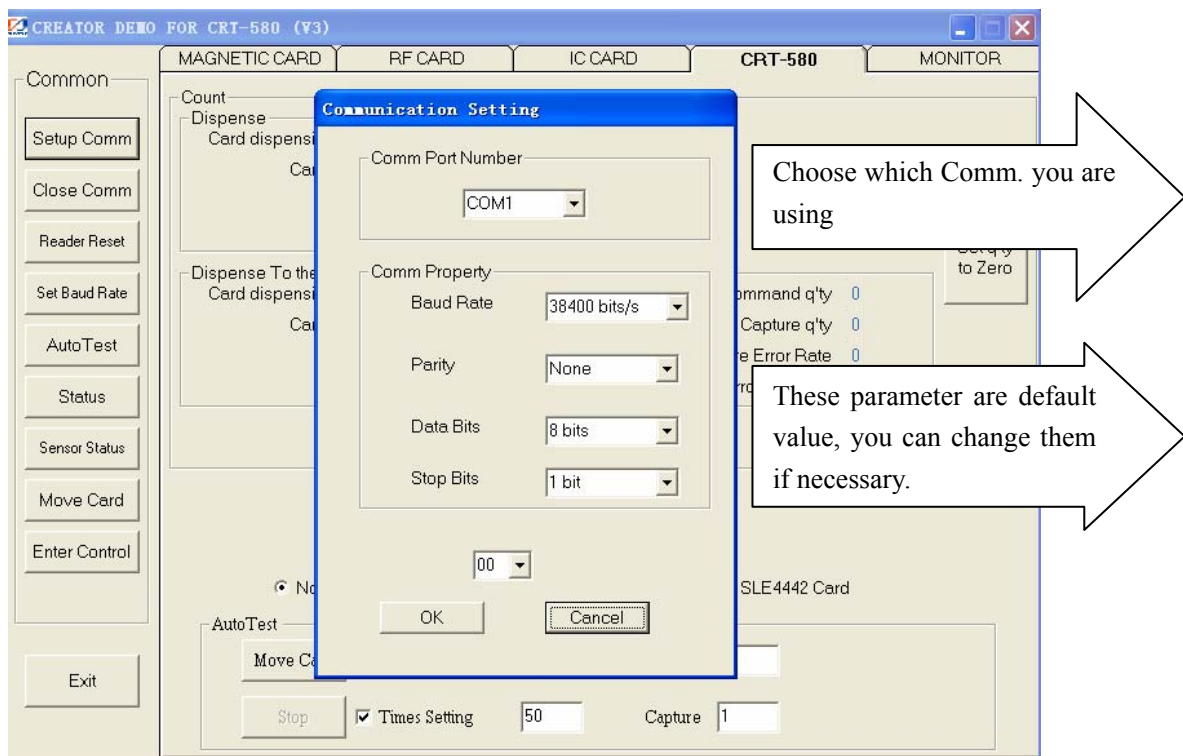
Power on(Card Issuing Machine, DC24V.)

Step 3:

Open the Demo, Press “Enter” button.



Setup Comm: Setup the Comm.



Close Comm: Close the Comm.

Reader Reset: Reset the reader(get the version information of reader)

Set Baud Rate: Set the Baud Rate.

Auto Test: Test the card type.(For IC card and RFID card)

Status: Read the status of the reader

Enter Control: Choose to prohibit card enter or permit card enter; Choose card stop position.

Exit: Exit demo

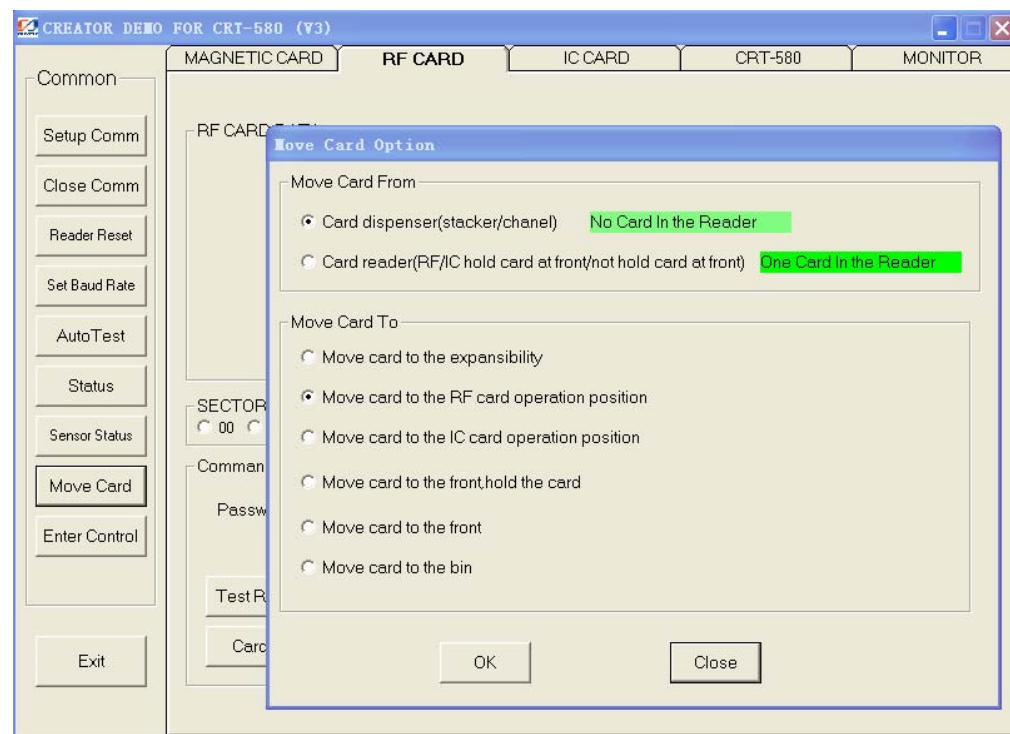
Step 4:

Press "Setup Comm" to setup the Comm.

Ok, it is ready for demonstrating.

Now you need to choose "Move card":

-Move card: Choose the move card from/to



## RFID CARD

Dispense the card into RF card operation position

Select sector(00~15)→Check password→Select block(0~3)→Read/Write

Notice: The default password is: FFFFFFFFFF

See details in Reader Communication Protocol about the operation of KEY A, KEYB, Value operation and so on.

## MAGNETIC CARD

Dispense the card into reader.

Press "Read"to read the card.

Also you can choose Auto Test to read the card automatically.

## IC CARD(CPU Card)

Dispense the card into reader. Choose “IC card”→ “Auto test”, then it will show the card type.

Press “Reset” to get the information, and then select the command or input the command and send. Check it with the returned value. (this is the screen for CPU card only)

