



---

## DV Touch SAW Touch screen Kit

---

### Hardware Installation Guide

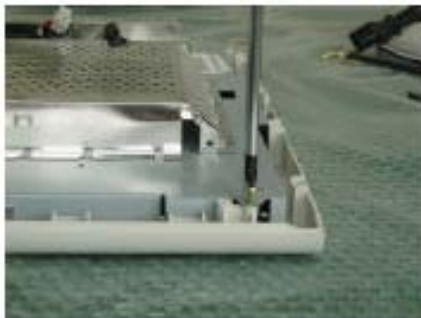
1. Place the monitor on the working desk the rear side up. Prepare the tools illustrated in the following picture.



2. Loosen the screws on the back of the monitor. Take off the monitor back housing and then unplug the power cable inside the monitor.



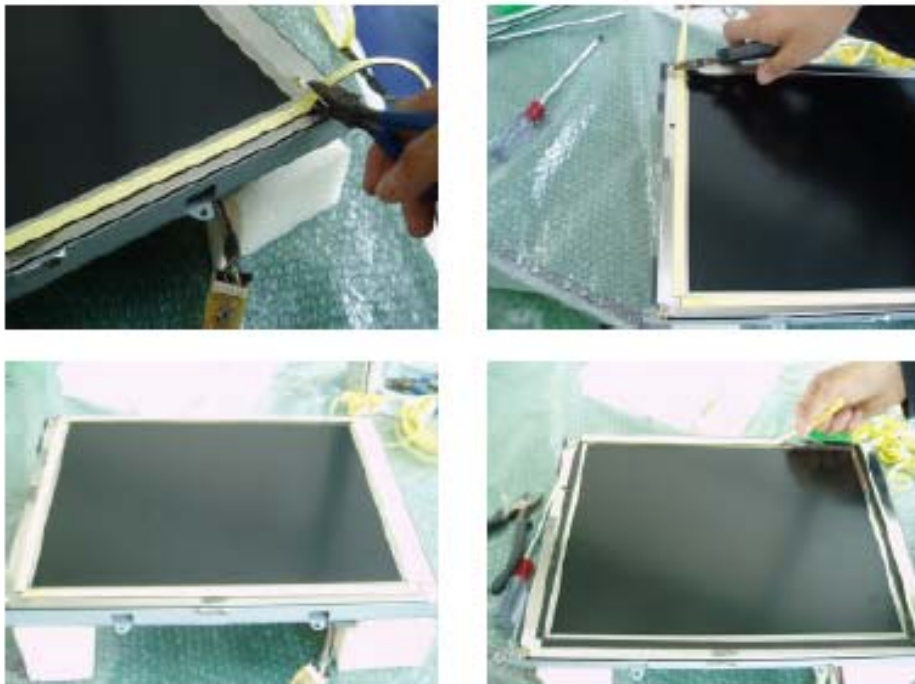
3. Loosen the screws inside the monitor.



4. Take off LCD module and keep it in a safe place as illustrated on the picture.



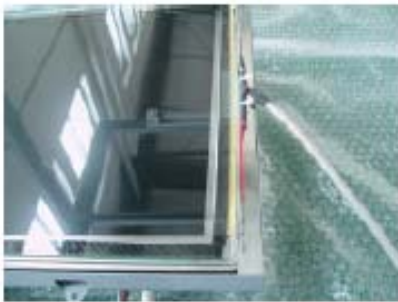
5. Attach the double side adhesive tape to the four sides of LCD Module.



6. Attach the mounting strips to the inner side of the monitor bezel as close as possible to the viewing screen.



7. Align and press firmly SAW touch panel to the front side of the LCD module.



8. Assemble LCD module with SAW touch panel to the front bezel. Lay the SAW touch signal cable over the LCD module back side. Attach the controller board with double side adhesive tape to the free place on the back side of LCD module.



9. Ground the SAW touch panel and controller properly. Screw the LCD module up to front bezel. Make appropriate holes in back housing as SAW controller signal and power cables outlets.



10. Join the back housing with front bezel and tighten the screws for finishing installation.

