

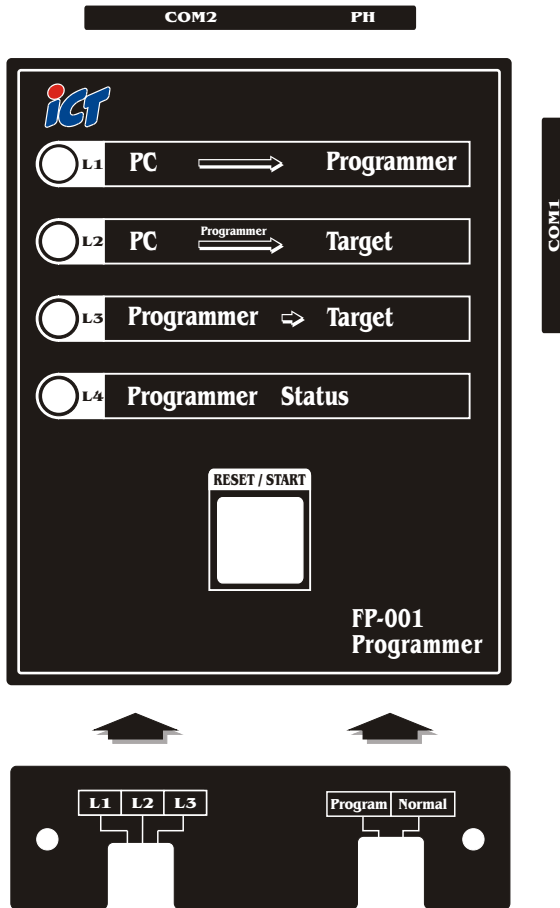
FP-001 → → → **PROGRAMMER**



ict International Currency Technologies

Product Overview :

The ICT FP-001 Programmer is designed for easy updating A6/A7 Serial Bill Acceptor Flash ROM.



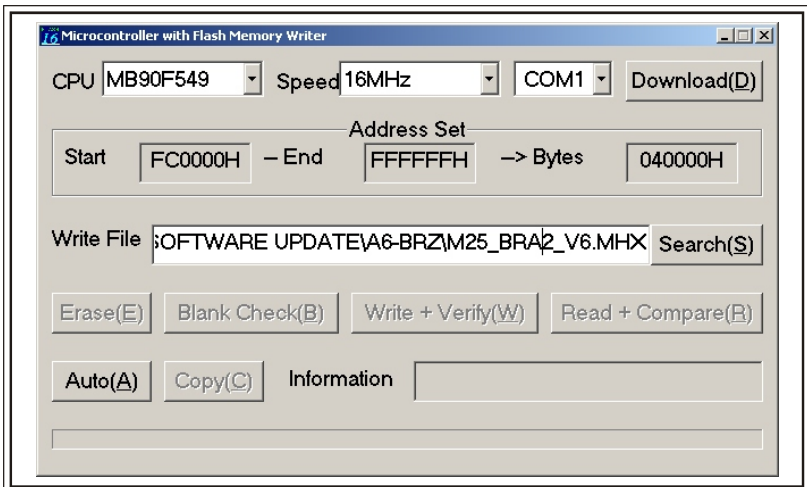
Cable Connection :

1. Connecting RS-232 cable to the each side of PC & Programmer.
(PC ----- COM1 Port) (Programmer ----- COM2 Port)
2. Connecting a RJ-45 cable from PH port on the Programmer to Bill Acceptor's RJ-45 port.

Operation Manual :

◆ Function 1: (PC ----- Programmer)

1. Switch to L1 position, the L1 on the top LED will stay green
(PC ➡ Programmer)
2. The L4 LED will be flashing. If not, Please push the Reset/Start key to reset Programmer. Also make sure the programming Dipswitch on Normal Position.
3. Launch application software Flash16.exe located on you CD. Make sure Choose the CPU type is MB90F549, Speed as 16MHZ, COM1 port (or COM2 depends on your computer configurations). Press search to load the Currency Flash File that you want to use. Click Auto.



4. Remember During the downloading, L4 LED will become orange and flashing. When it's finish. The L4 LED will stay as orange. Press Reset / Start key again to reset the Programmer. LED will flash as normal green. The new Flash File will stores on the FP-001 Programmer Now.

◆ Function 2: (PC-----Target)

1. Switch to L2 position, L2 LED on the top will stay green (PC ➡ Target)
2. The L4 LED will be flashing. If not, Please push the Reset/Start key to reset Programmer. Also make sure programming Dipswitch on Normal position.
3. Using the Step as Function 1 shows above to launch application software Flash16.exe located on you CD to download new Flash File directly to Bill Acceptor. That means at this time. The FP-001 Programmer just like a path to communicate between you PC and Bill Acceptor. No Flash file will store on FP-001 Programmer.

◆ Function 3: (Programmer-----Target)

1. Switch to L3 position, the L3 on the top LED will stay green (Programmer ➡ Target)
2. The L4 LED will be flashing, If not please push the Reset/Start key to restart Programmer. Also make sure Programming Dipswitch on Normal position.
3. At this time it's ready for programming the Bill Acceptor by using FP-001 Programmer.
4. Presses the Start Switch one time, Wait a few seconds. The L4 will turn red and Flashing. It means it's doing programming, erasing and verifying.

LED Display As Follow :

- (1). RED (Starts)
- (2). OFF (Erasing)
- (3). RED Flashing (Verifying)
- (4). ORANGE (Finish)
5. When it finished. L4 LED will stay orange. Now, Press Start switch again to Let the Bill Acceptor auto adjust sensor. Remember in the front of the Bill Acceptor LED will stay green. Insert a testing write card; The BA will eject the Card after finished adjusting.
6. Press one more time Start key, The Bill Acceptor will automatically power cycle It. The Bill Acceptor just finished Updating new flash.
7. Now you can take this pre-programmed FP-001 Programmer to another Bill Acceptor. Just simply connecting the RJ-45 cable from PH port on the Programmer to Bill Acceptor's RJ-45 port. Just repeat Function 3 (Programme r----- Target) to program every Bill Acceptor on this time.