

# UExpress User Manual

Version History

Version No.	Description	Released
Version 1.0	For Uexpress V1.6.2	08-04-2010



---

# Contents

## *About Uexpress*

Introduction .....	1
Menu.....	2
Setup .....	3
Helps.....	4
Language .....	5
Connect .....	6
Setup.....	7
Modify Configuration.....	7
Save .....	7
Disconnect.....	8
Configuration.....	9
Products.....	9
Connect Method .....	10
Working Mode.....	11
1D Code .....	12
Composite Code .....	15
2D Code .....	16
OCR .....	17
Data Formats .....	18
Imager.....	20
Scanner I/O.....	21

## *Updating*

Update procedure .....	22
------------------------	----

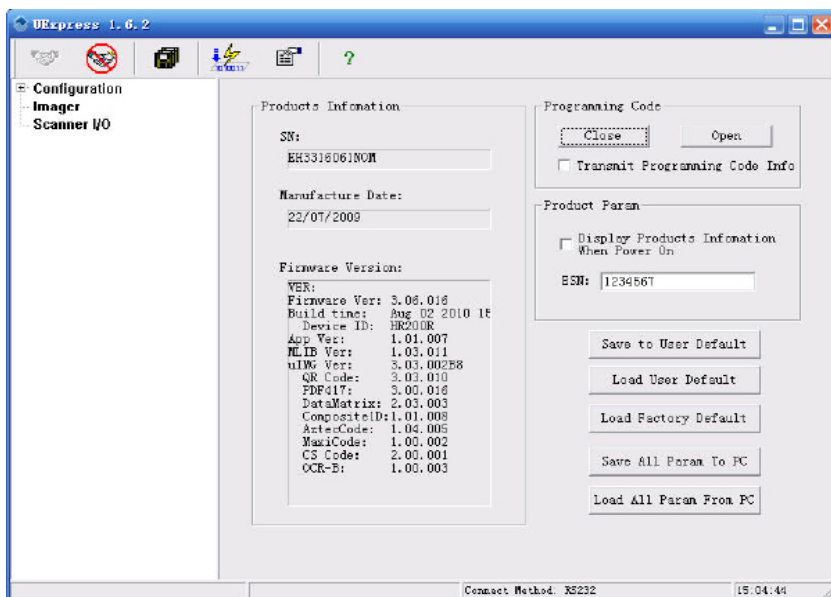




# About Uexpress

## Introduction

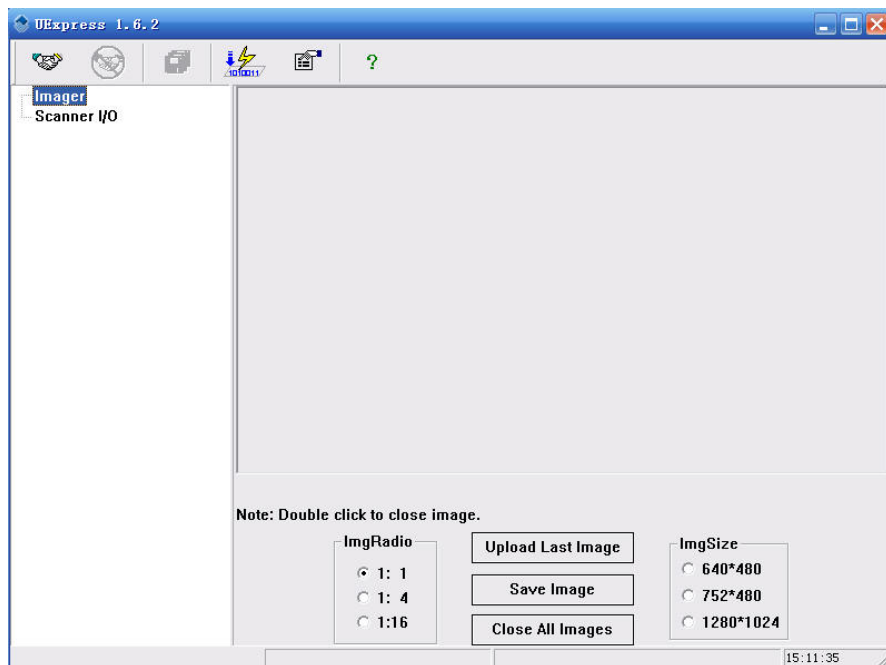
This software is developed by Fujian Newland Auto ID Ltd., that to be used by PC. It is meant to be equipped with one-dimentional or two-dimentional barcode hand-held machine( eg: HR200,EM2021,EM3000,FM2100) that designed by the same company. It's main funtion including: loading infomation and decoding parameters, setting the parameters,assessing images those are taken during the decoding process, saving the images by pc, receiving the result after sucessful decoding, resetting the pamameters by commands.

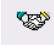

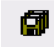

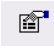
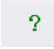


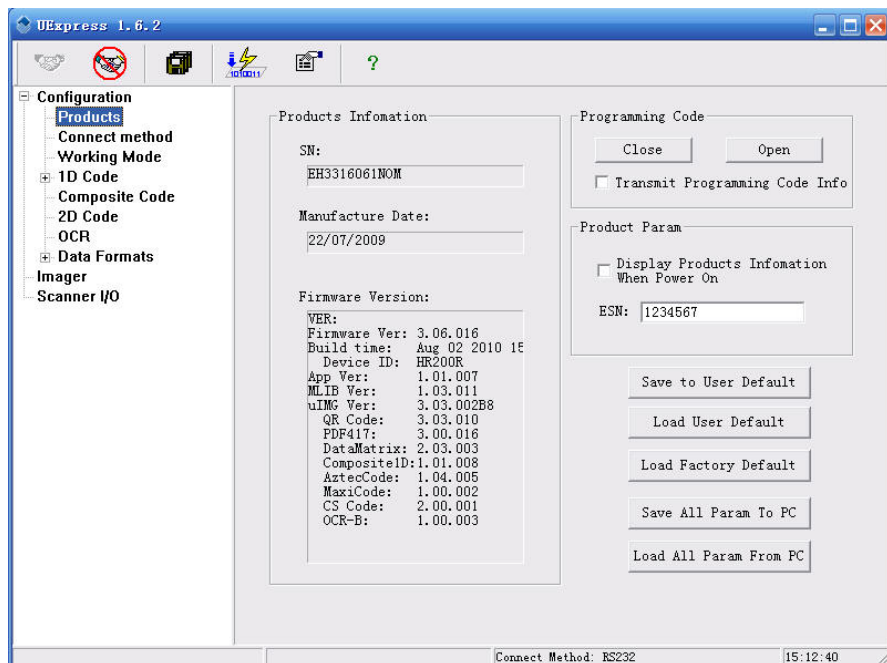


UExpress has six function options, include the software execution connect / disconnect the device, Save, updated, languages, and helps.

When the device is not connected to PC, some of the options will not be able to be selected. Then the corresponding function key will be grayed, such as below:



- 1、 **Connect:** When the device is not connected to the PC, the interface on the left of the settings will only be displayed the “image-related” and “device interaction”, and neither of these two functions can be set. Only the device connected to the PC, to appear “information configuration”.
- 2、 **Disconnect:** When the user completed set or want to replace the device which is set, you must first click on the button, the device with the PC connection is disconnected, and then remove the device from the PC.
- 3、 **Save:** Save the settings what the user done.
- 4、 **Updated:** When the device application or the kernel has a newer version available, you can use this feature to easily upgrade them. Regardless of the device and the PC is connected, this icon is in, you can visit the state, click on it, UExpress create a process running QS-UpgradeII.exe, users follow the prompts to complete the upgrade.
- 5、 **Helps:** UExpress copyright information and main functions.
- 6、 **Language:** simplified Chinese and English to choose



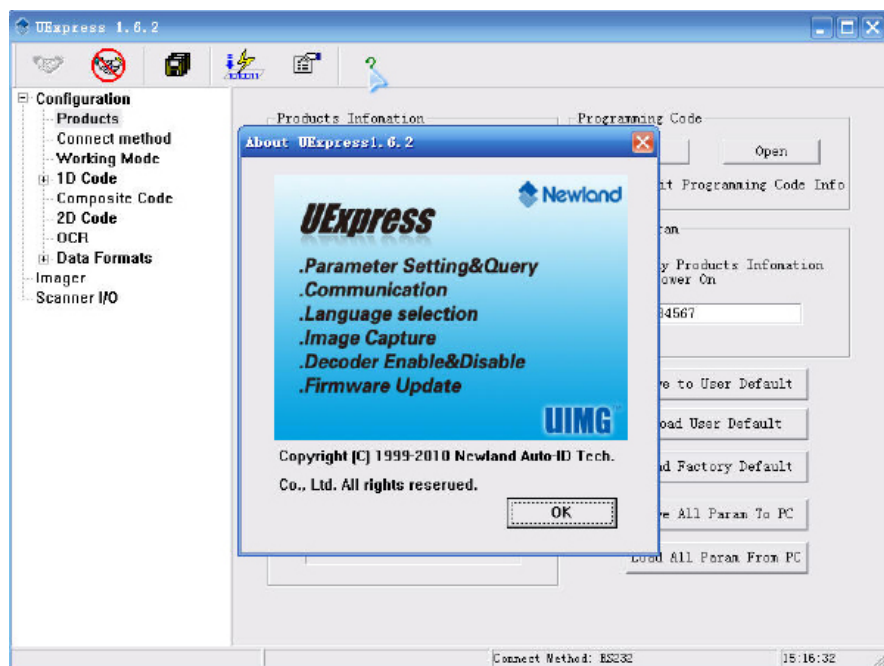
The software can be set for information configuration, images and equipment correspondence, you can visit the specific content of the directory tree on the left to view.

Click to select the corresponding entry, set the options on right.

The setting contents please refer to "Operation Guide" section.



Click the "Help" button will display the copyright information and UExpress main functions.





Click the "Option" button, you can change the UExpress interface language. Currently the software supports Simplified Chinese and English language. The choice of language interface as shown below.。



After users choose their language, if the selected language is different with the previous display , the following tips will pop up dialog box that prompts the user to restart UExpress software, the language changes to take effect.







## Operation Guide

### Connect

The equipment connected with the PC via data cable, and then run UExpress, click the "Connect" button, the dialog will pop up the following connections:

**Selection**

**Cable Type**

- ☒ Serial Ports
- ☐ USB

**COM Param**

Port: COM1

Baud Rate: 115200

Data Bits: 8

Stop Bits: 1

Parity: None

Back Cancel OK

Users may connect device and pc through the serial port or USB port, click OK, UExpress start connecting devices

If user chooses to connect through the serial port, the user must select the serial parameters in the dialog to match the device.

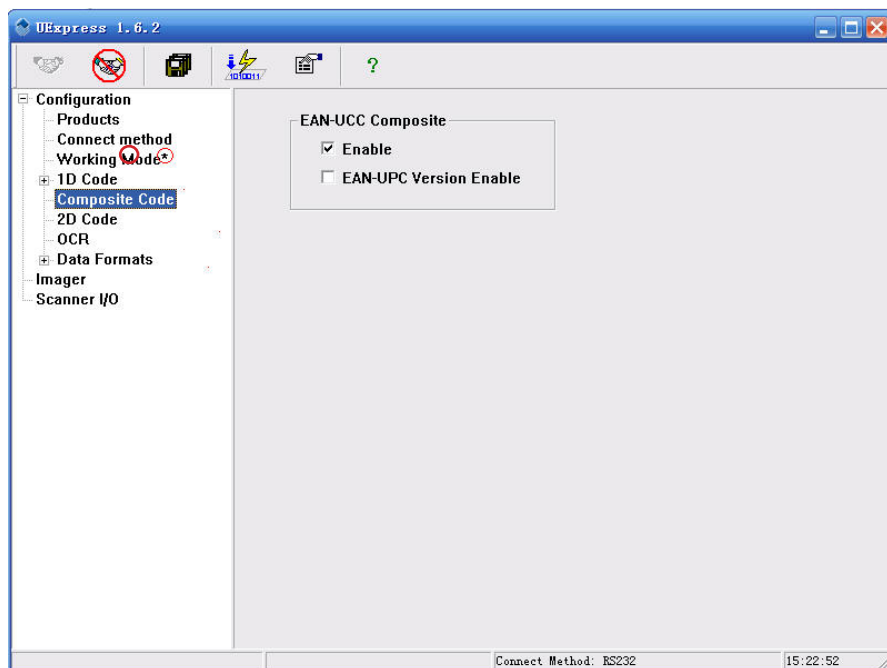
If user chooses to connect via USB, the user has three ways of communication available: USB DataPipe, USB virtual serial port and HID-KBW. These three methods are required to install the driver before using: USB DataPipe and USB virtual serial port driver is required: udp\_and\_vcom\_drv.1.7.3, HID-KBW need driven: CDC - Vitrual COM Driver. All of the drivers could be downloaded on [www.nlscan.com](http://www.nlscan.com).



-----  
EM3000 does not support USB connections.  
-----



### Modify Configuration



Click on the left directory tree, can be set the right side the appropriate options, after setting not saved if set to switch to another page, set the original page after the name of the corresponding tree will automatically add "\*" (as shown above), suggesting modifications in the content before the set has not been saved. Save successful "\*" number will disappear.

### Save

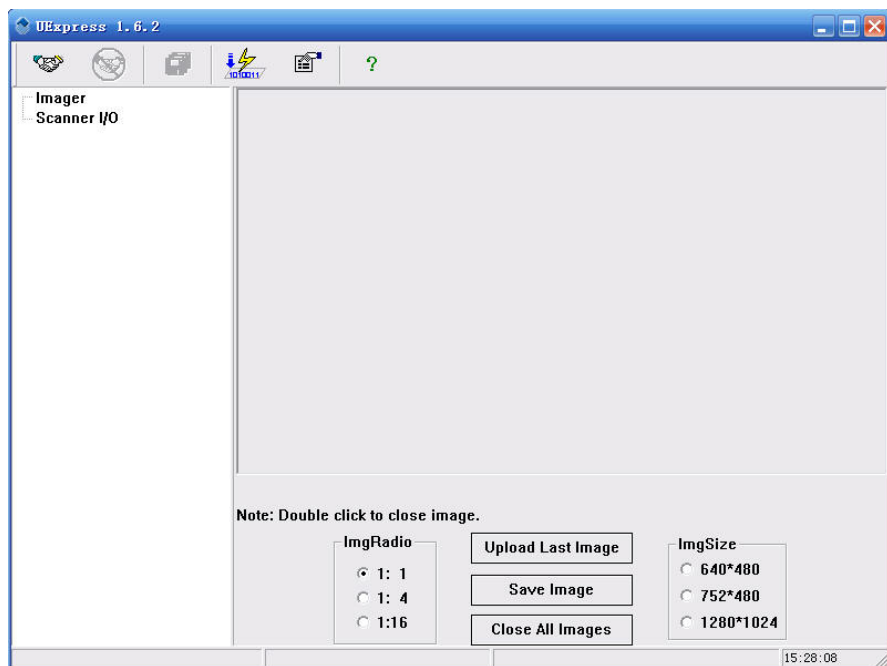
Save button is operated successfully only after connecting the device. Click the button to save the modified settings to the device, and the dialog prompt the corresponding "Save successfully!", "Save failed!" And "device settings have not changed!", as shown below :





### Disconnect

"Disconnect" button is activated after successfully connect the device. Click this button, UExpress will disconnect device,as shown below.





"Configuration" support to search the device informations and connection, operating mode, the one-dimensional code, composite codes, two-dimensional code , OCR and data format settings.

### Products

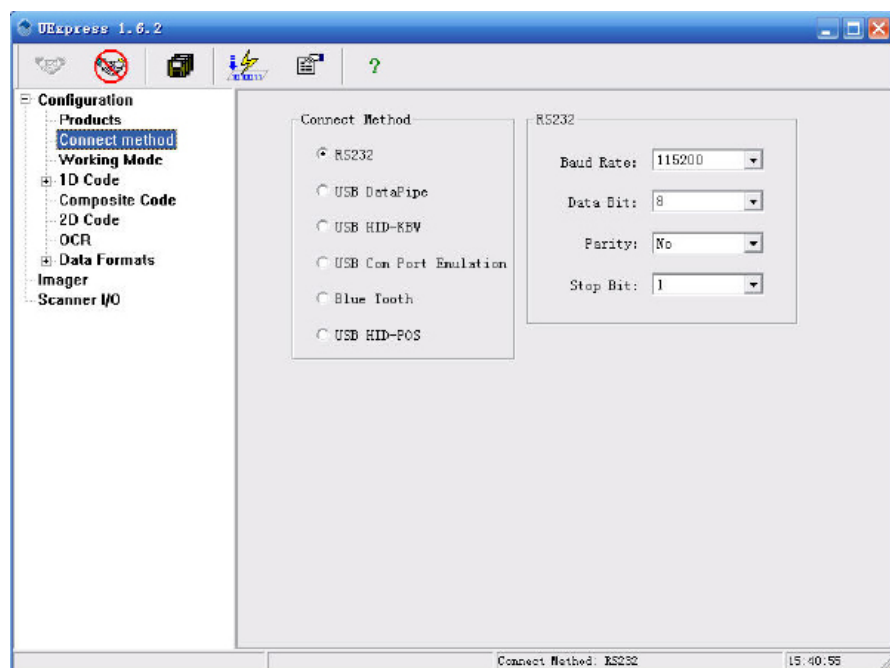
In the "Product" configuration page, user can take a view on more equipment information, including serial number, manufacture date and version information and so on.

User may enable or disable the program code function, decide whether to send the program code info. and to display the boot device info.

Meantwhile user may also save private settings as "User default" in the device or PC.



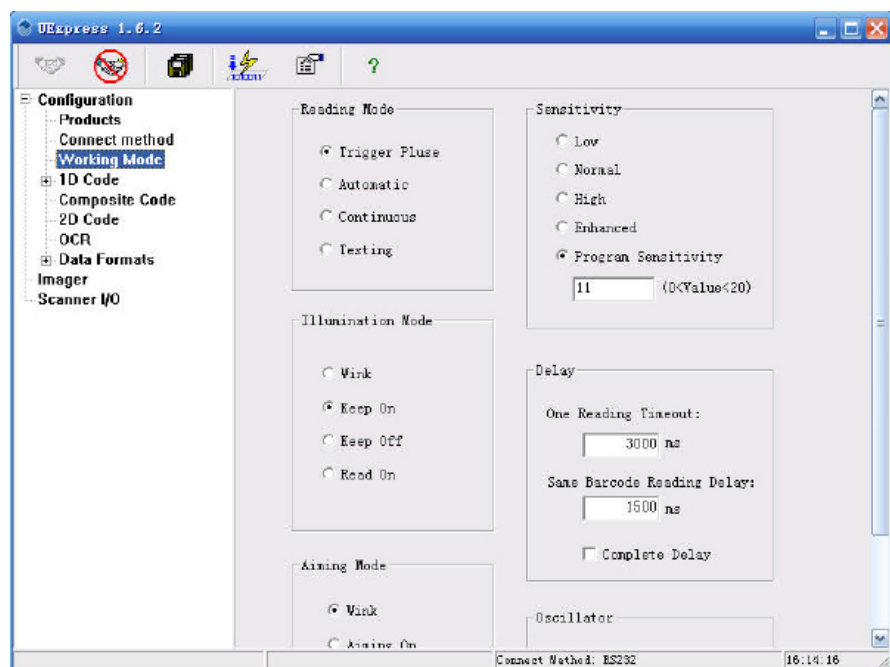
### Connect Method



User can select the serial port, USB DataPipe, virtual serial port and so on, then save the set and re-open Uexpress to connect device with PC.



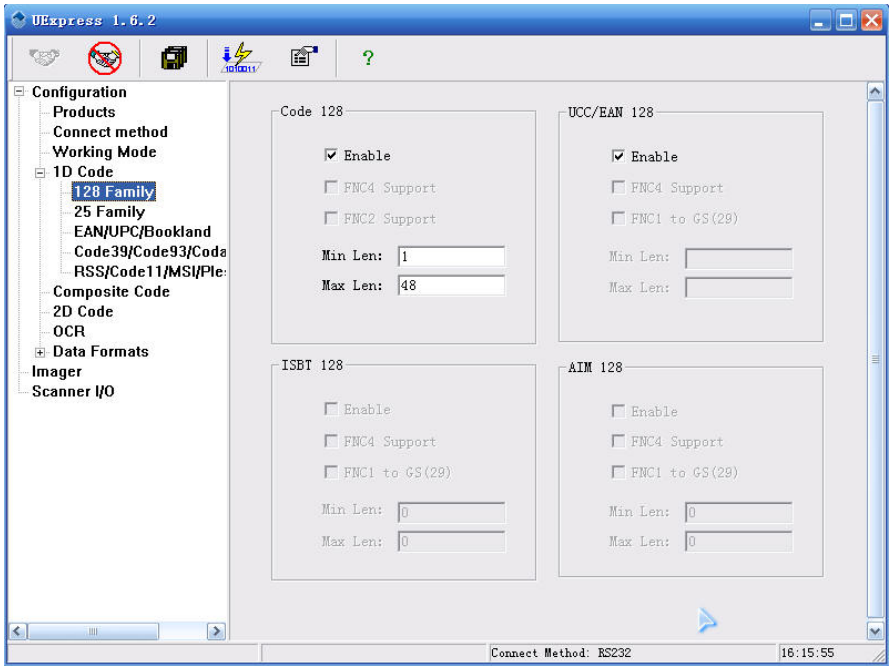
### Working Mode



"Working mode" configuration page provide reading mode settings, illumination and aim control, sensitivity, delay and oscillator settings.

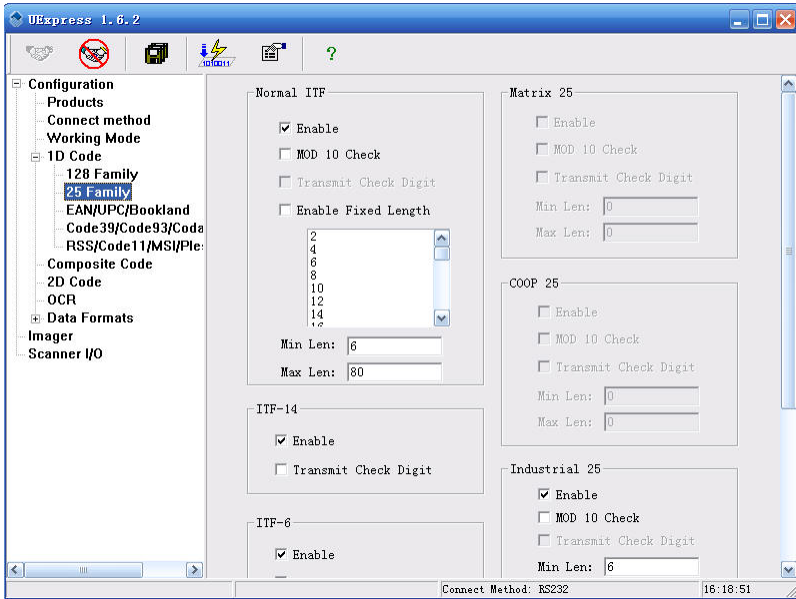


### 1D Code

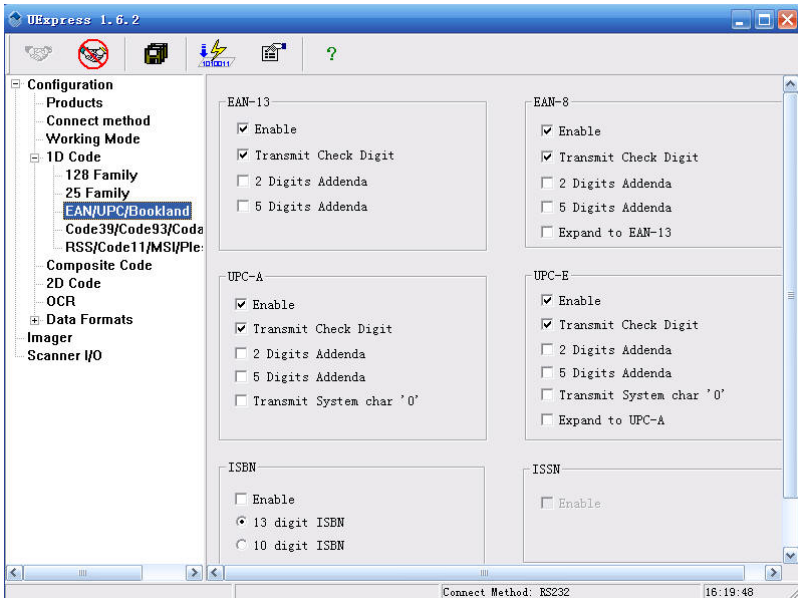


Under 1D code set contains barcode 128 family, 25 family, EAN / UPC / Bookland, Code39/Code93/Codebar/CodeZ, RSS/Code11/MSI/Plessery.

Above is for code 128 family,including Code 128, ISBT 128, UCC/EAN 128 and AIM 128.



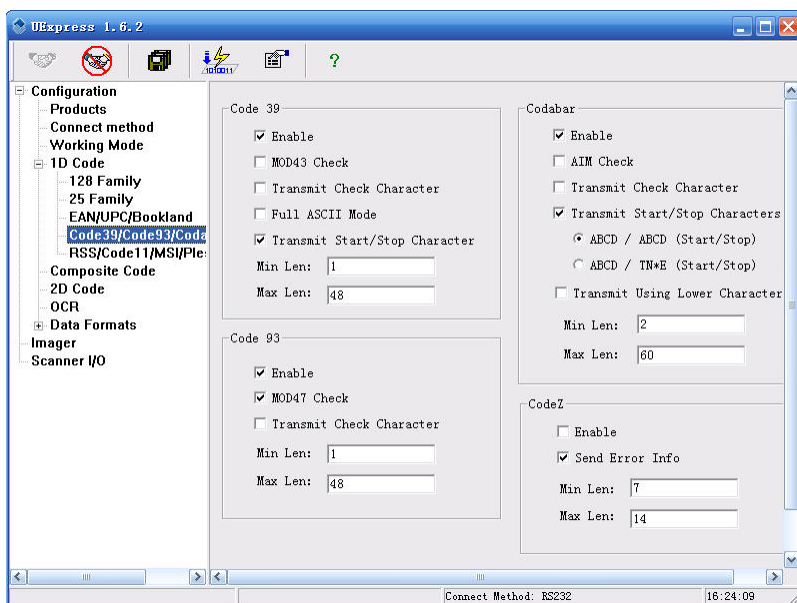
Above picture shows configuration page of 25 series barcode.



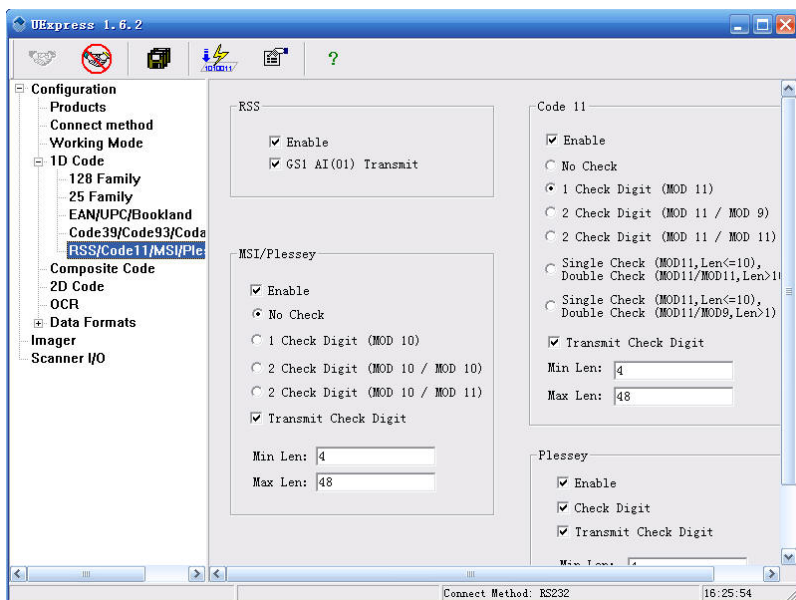
Above picture shows configuration page of EAN/UPC/Bookland barcode.







Above picture shows configuration page of Code39/Code93/Codebar/CodeZ.

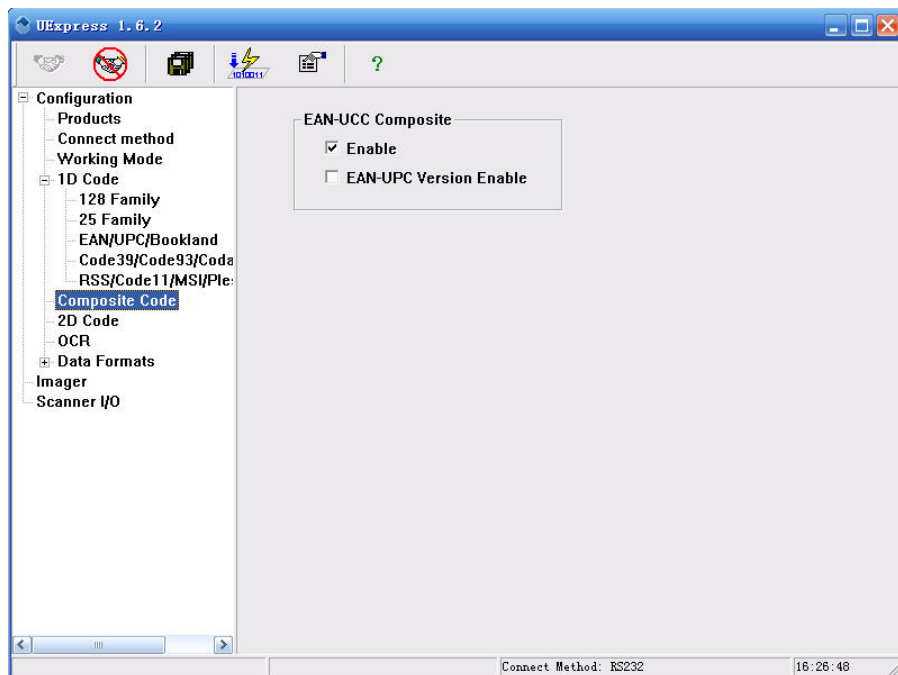


Above picture shows configuration page of RSS/Code11/MSI/Plessey.





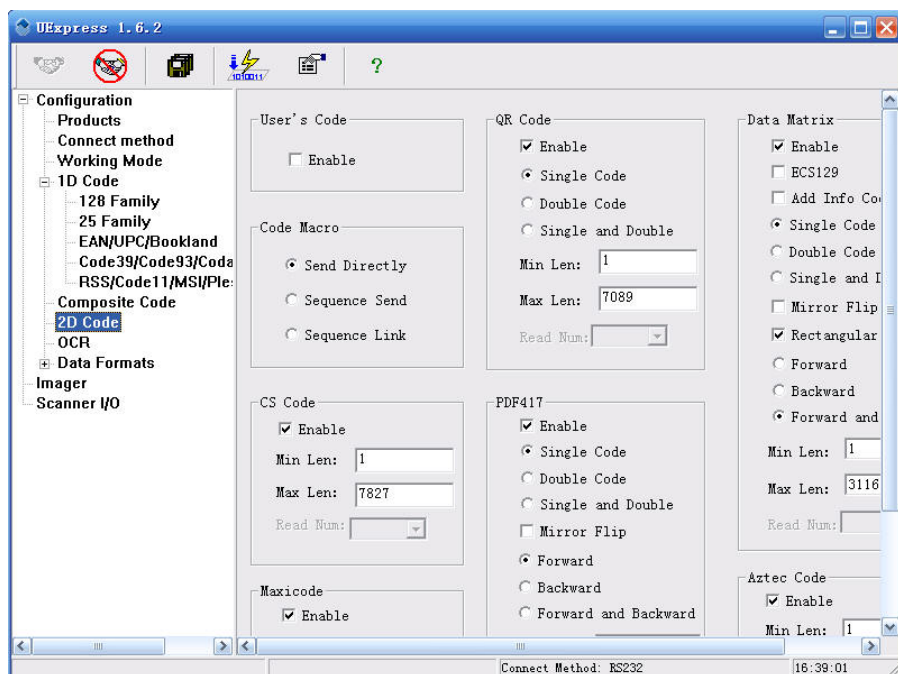
### Composite Code



Composite code configuration page provided EAN-UCC settings.



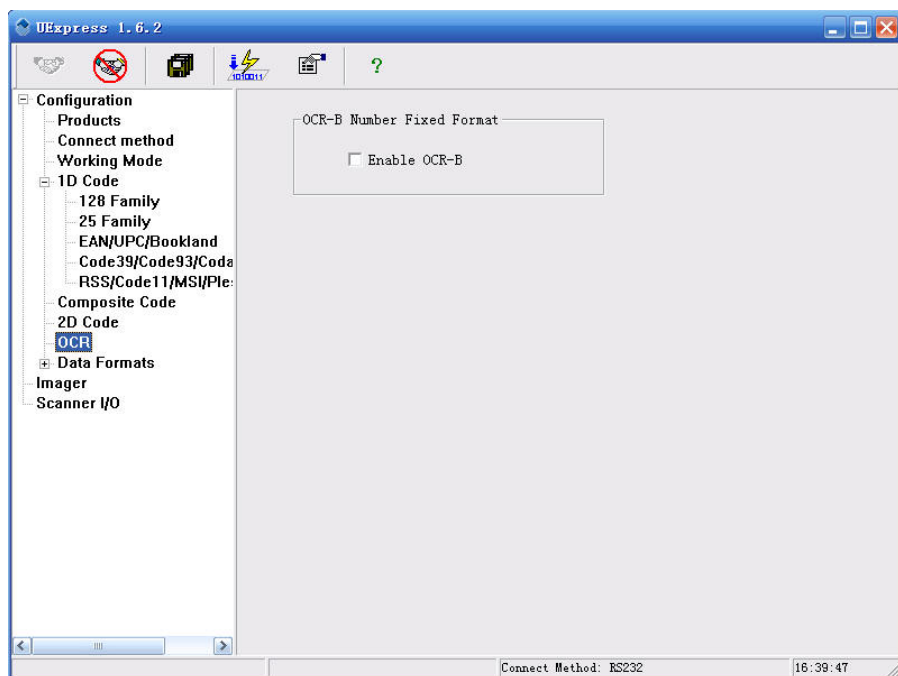
### 2D Code



2D code configuration page, including user-defined code, Han letter code, Maxicode, QR Code, PDF417, Data Matrix, Aztec code settings.



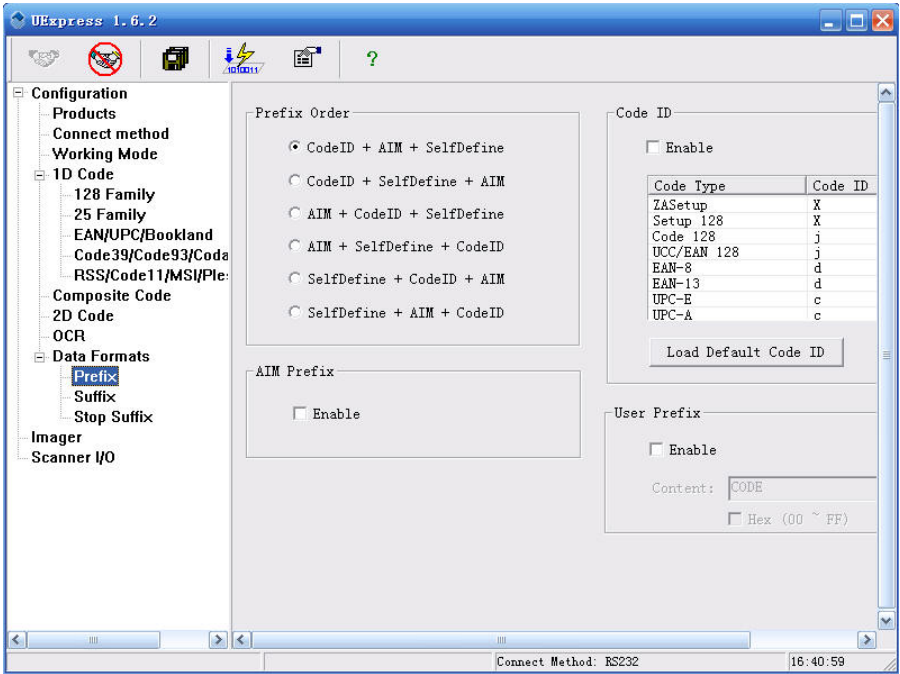
### OCR



Above page provides fixed-length format of OCR-B to enable setting.

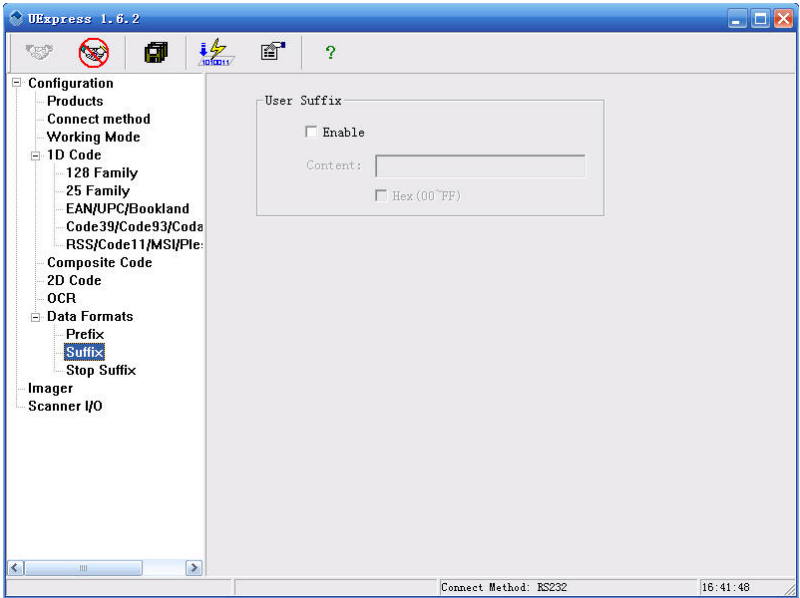


### Data Formats

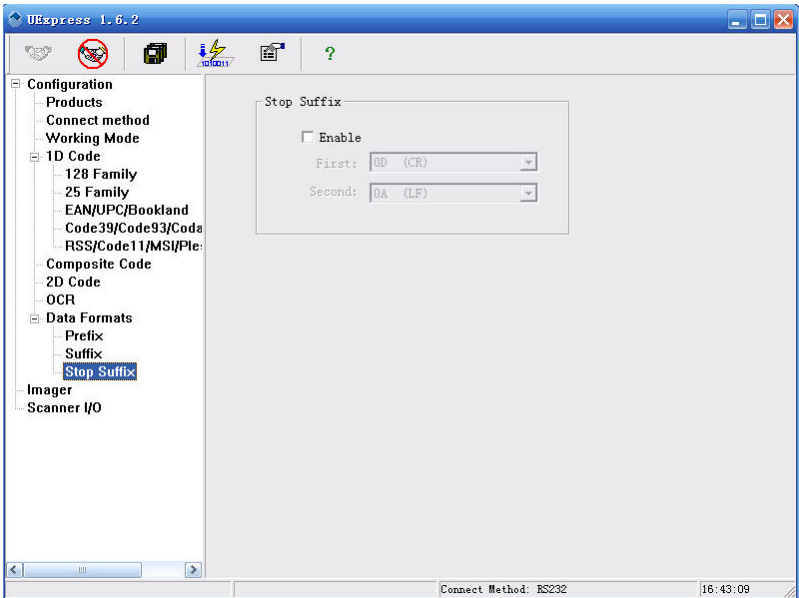


Data Formats contains 3 items:Prefix,Suffix and Stop Suffix.

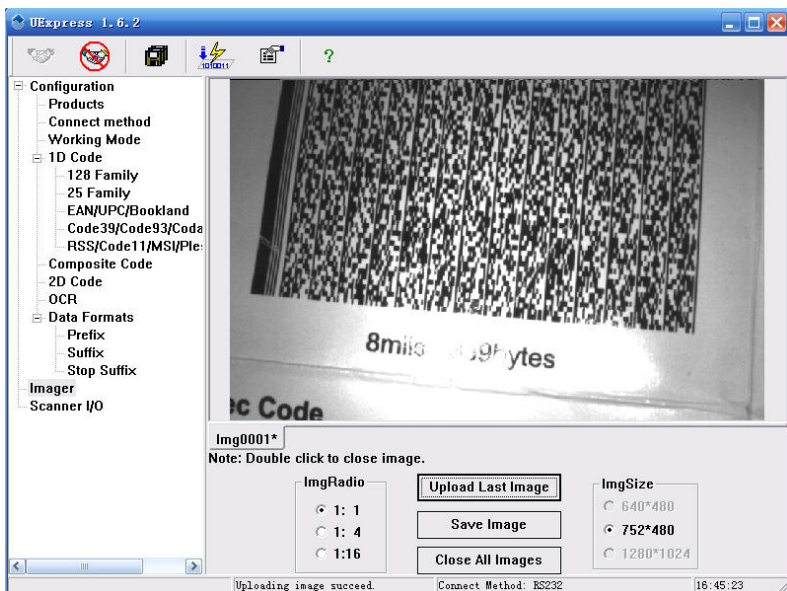
Above page is for Prefix, including Prefix Order, AIM, CodeID,and User Prefix.



The picture shows the suffix set on the configuration page.

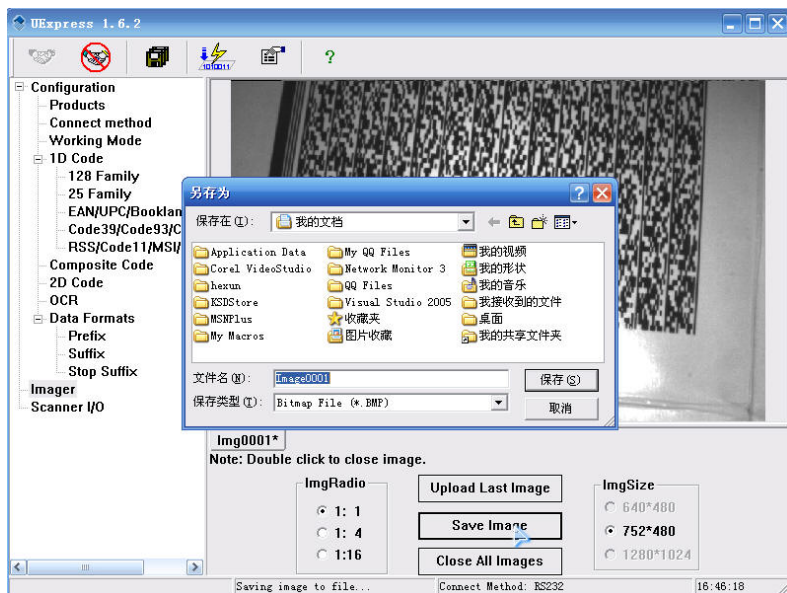


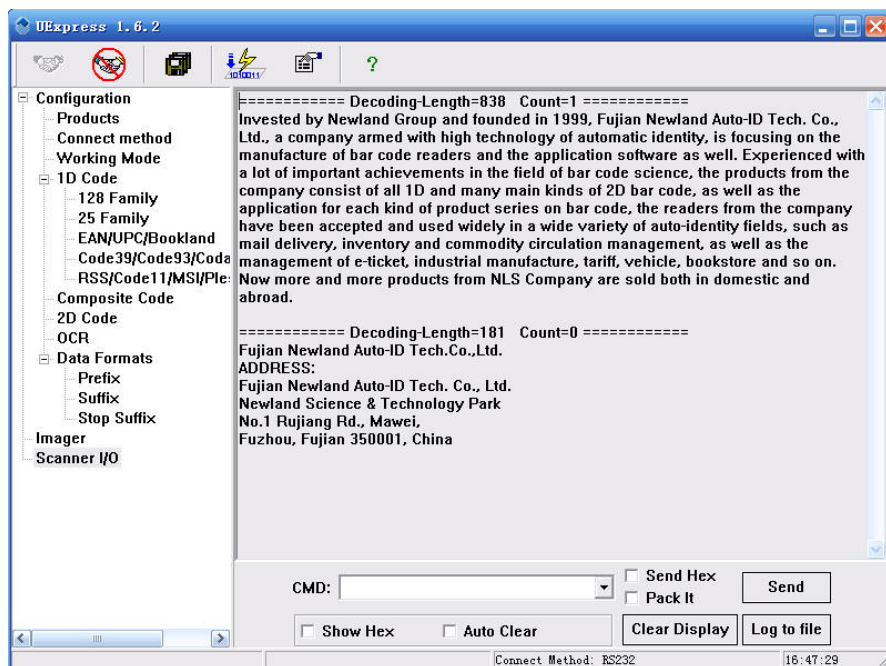
The picture shows the Stop Suffix set on the configuration page.



Users may select "Imager", and then click "Upload last Image" to capture the last frame as display as above show.

Users can set the ratio of the image. UExpress provides 1:1, 1:4, 1:16 proportion. Of course users may easy to save picture as below show:





Above is to receive information on reading barcode.

Auto Clear: Only display the current reading data and automatically clear previous data.

Clear Display: Clear all the displayed data.

Log to file: Save data into PC

Users can also choose to display in hexadecimal, pack data and send it.

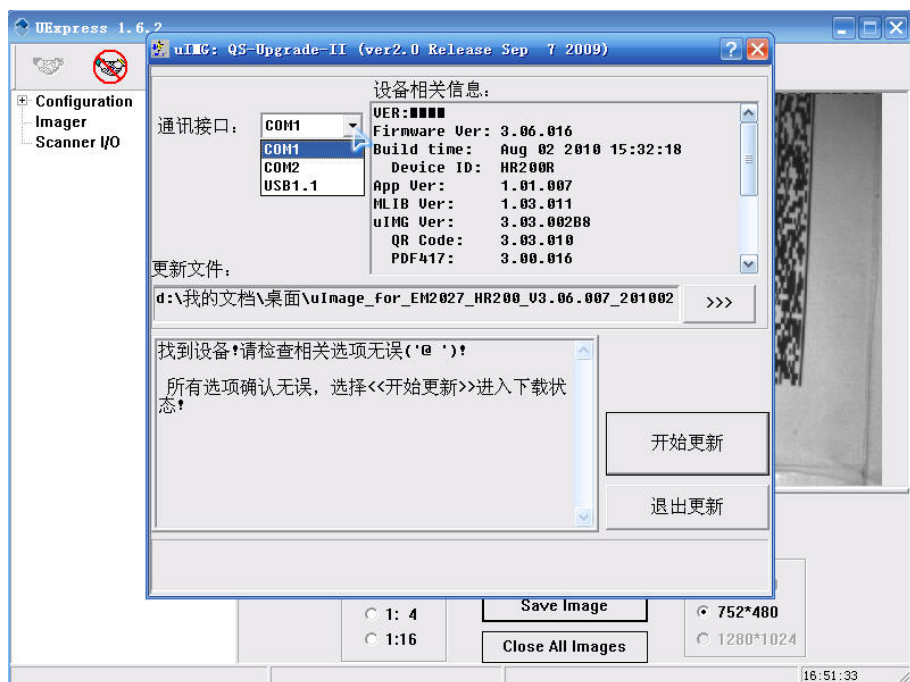




# Updating

## Update procedure

When the device applications or kernel has a newer version available, the user can easily update via UExpress. Click the Update button, as shown below.





Select the appropriate parameters before updating, as shown below.

